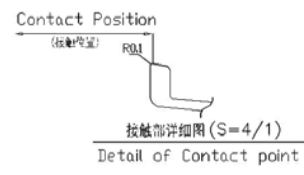
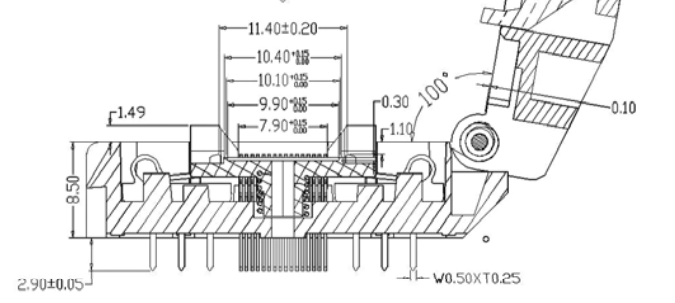


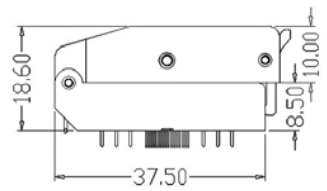
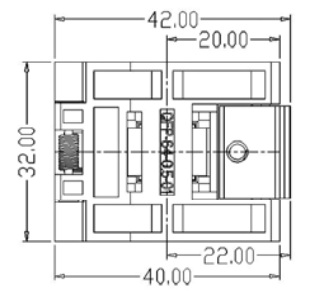
4- ϕ 3.2 THRU HOLE SPOT FACING ϕ 6.4 DEPTH4.0



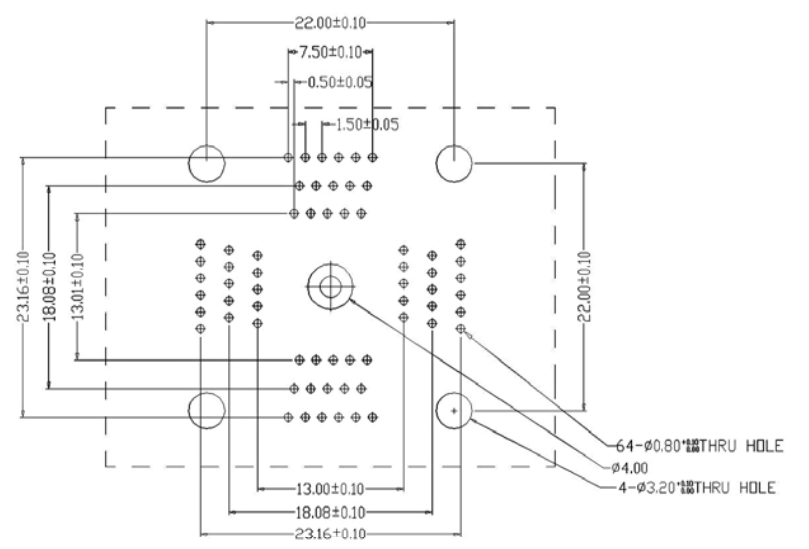
Insertion IC 插入方向



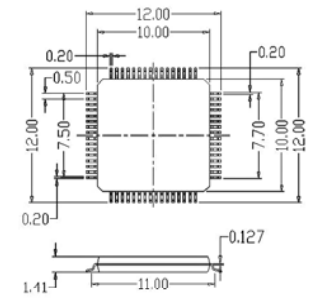
SEC.A-A S=2/1



外形参考图 DIMENSIONS



PCB PATTERN (Top View)



APPL ICABLE IC S=2/1

- 1. MATERIAL AND FINISH**
1. SOCKET LID :PEI
 2. SOCKET BASE :PEI
 3. CONTACTS :BeCu,SELECTIVE Au-AuFLASH OVER NI PLATING
 4. SPRINGS :STAINLESS STEEL ,PASSIVATED
- 2. SPECIFICATION**
1. INSULATION RESISTANCE : 1000M Ω or more at DC 100V.
 2. DIELECTRIC WITHSTANDING VOLTAGE: 100V AC for one minute.
 3. CONTACT RESISTANCE: 30m Ω or less at 10mA,20mV or less.
 4. OPERATION TEMPERATURE :-55°C--+170°C.
 5. Life Span :10,000 Times (Mechanical).
 6. CONTACT FORCE: 20g-150g with contact travel distance between 0.2mm-0.8mm

Δ C				DWG NO				PART NAME	QFP-64-0.5-01
Δ B				MATERIAL		SCALE	1:1	TITLE	QFP-64-0.5-01
Δ A				QTY	1	UNIT	mm		
REV	DESCRIPTION	DATE	CHECK	SHEET	1 OF 1	REV	01		
APPLICATION				APPROVE		DATE			
ANGLES	FINISH	ROUGH	ME	0.X:±0.1	CHECK	DATE			
ALL UNSPECIFIED CHAMFERS:CO.2				TRIC	0.XX:±0.06	DEGK	DATE	20140512	

AIISOCKET